

Marks :25

Time: 25 min

Q1. Choose the correct option:

7

1. Which is a shrub among the following?  
(a) Spinach (b) Mango tree (c) Lemon (d) Pipal
2. Which of the following terms constitutes the female part of the flower?  
(a) Sepals, petals and stamen  
(b) Stigma, style and ovary  
(c) Ovary, stamen and stigma  
(d) Ovary, style and stamen
3. The process of loss of water by a plant through leaves is called  
(a) evaporation  
(b) condensation  
(c) photosynthesis  
(d) transpiration
4. Which of the following has fibrous roots?  
(a) Peas (b) Radish (c) Wheat (d) Neem
5. Grape is an example of  
(a) trees (b) climbers (c) shrubs (d) creepers
6. Which plant has reticulate venation in its leaves?  
(a) Wheat (b) Sugar cane (c) Bamboo (d) Marigold
7. Which of the following is not a correct match?  
(a) Petiole: attaches the leaf to stem  
(b) Lamina: green flat part of the leaf  
(c) Margin: gives shape to the leaf  
(d) Veins: transpiration

Q2. Fill in the blanks:

5

- (a) The small green leaves at the base of flowers are known as \_\_\_\_\_.
- (b) The swollen basal part of the pistil is the \_\_\_\_\_, which bears the \_\_\_\_\_.
- (c) Stamen has two parts called \_\_\_\_\_ and \_\_\_\_\_.
- (d) The young unopened flower is termed as \_\_\_\_\_.
- (e) Roots absorb \_\_\_\_\_ and \_\_\_\_\_ from the soil.

- (f) Leaves are green due to the presence of \_\_\_\_\_.
- (g) \_\_\_\_\_ protect the flower when it is in the form of a bud in the initial stage.

Q3. Identify the parts of a plant from the functions given below:

4

- (a) Fixes plant to the soil
- (b) Prepares starch
- (c) Takes part in reproduction
- (d) Supports branches and bears flowers.

Q4. Match the parts of the plant given in column I with their function in column II.

2

Column I

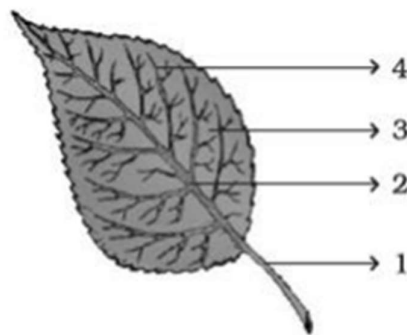
- (a) Flower
- (b) Leaf
- (c) Stem
- (d) Root

Column II

- (i) Excretion
- (ii) Photosynthesis
- (iii) Reproduction
- (iv) Bears branches
- (v) Anchorage

Q5. Observe the figure and attempt the questions that follow it.

3



- (a) Label the parts 1, 2, 3 and 4 in the diagram.
- (b) What type of venation does the leaf have?
- (c) What type of venation is seen in grass leaves?

Q6. Observe the picture of an activity carried out with leaves of plants and polythene bag.

4



Answer the following:

- (a) Which process is demonstrated in the activity?
- (b) When will this activity show better results on a bright sunny day or a cloudy day?
- (c) What will you observe in the polythene bag after a few hours of setting up the activity?
- (d) Mention any one precaution you must take while performing this activity.